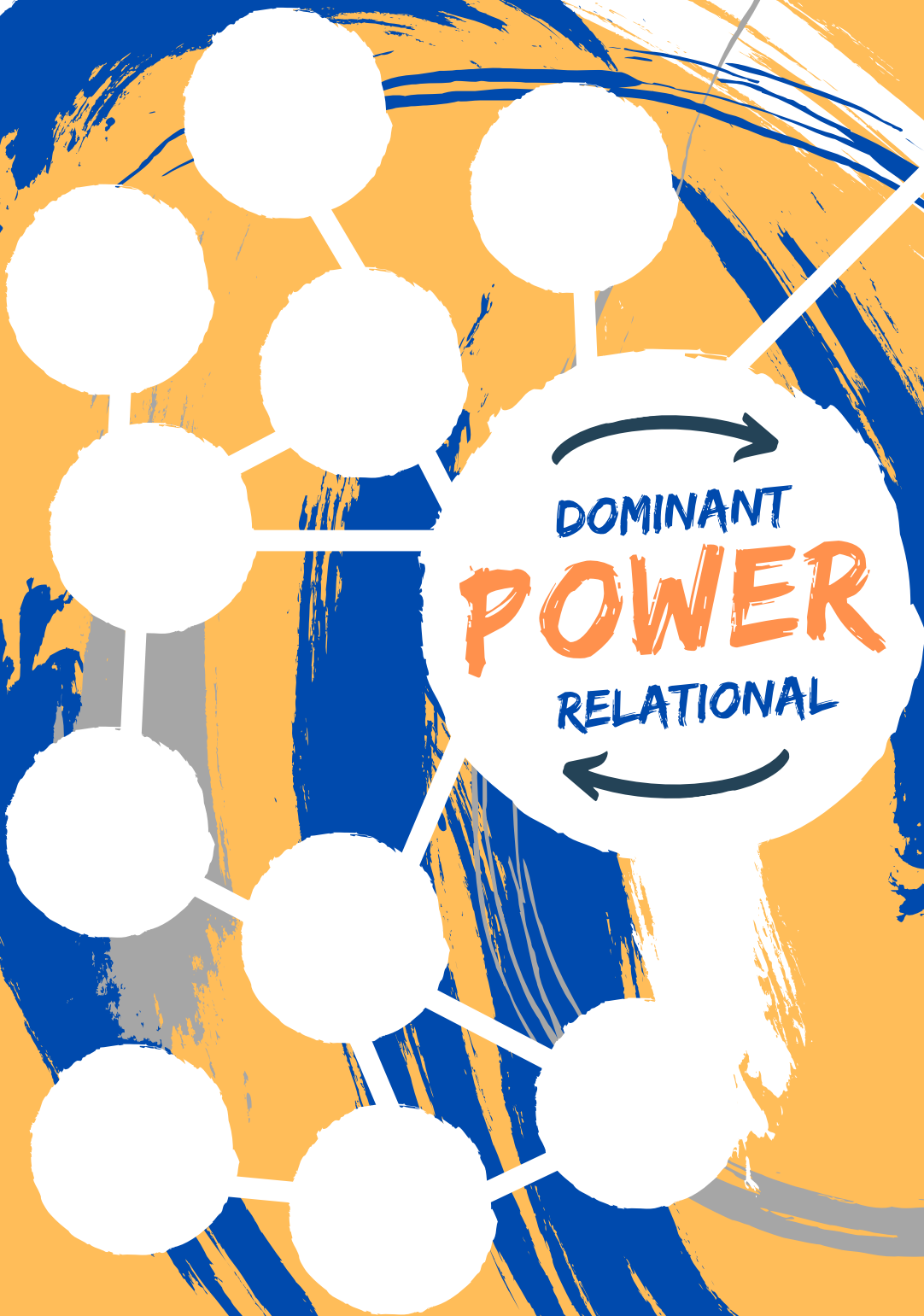


PEER SUPPORT ORGANISING

Worksheet #1



Relational vs. Dominant Power



PEER SUPPORT ORGANISING

(Knowledge-sheet) #1

Instructions

1. On the right fill the boxes with the first things you think about when you think about dominant Power
2. On the left fill the circles with the first things you think about when you think about Relational Power

What is it?

Relational Power in the context of organising relates to the power built through forging mutual relationships that do not rely on coercive or hierarchical motivation to influence others. These relationships become the method through which you achieve change.

How do I build relational power?

In worksheet #2 *My Stick Person* you will learn how to forge connections through shared purposes, building your relational power.

How does it relate to my work?

By establishing relational power, you have the ability to connect with others, to influence the power of a group with mutual purpose, shared focus and shared strength. This power can be used for multiple shared issues, again and again.

